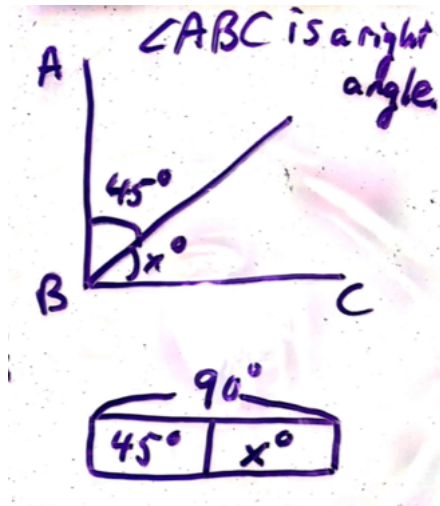


G4-M4-Topic C

G4-M4-L9: Consider this subset for students to complete before the Problem Set.

- $9 + 9$
- $9 + 9 + 9$
- $9 + 9 + 9 + 9$
- $90 + 90 + 90 + 90$
- $6 + 6$
- $6 + 6 + 6$
- $60 + 60 + 60$
- $12 + 12$
- $12 + 12 + 12$
- $120 + 120 + 120$

G4-M4-L10: Consider using bar models as an additional support for finding unknown angles, e.g.



G4-M4-L11: Consider altering problems to include more multiples of 10 (*Friendly Numbers*) so that computation does not overwhelm struggling students.